

75

HOLMES-EUREKA LUMBER COMPANY'S SAW MILL & LUMBER YARDS

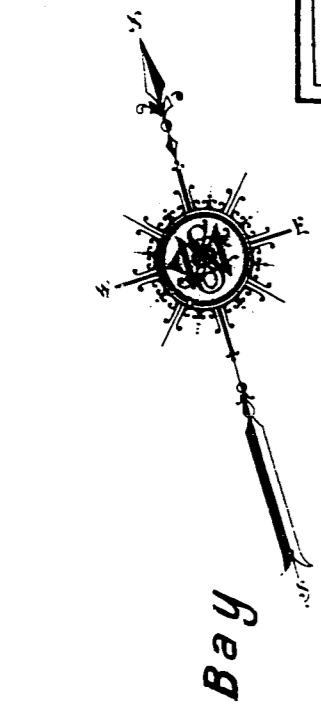
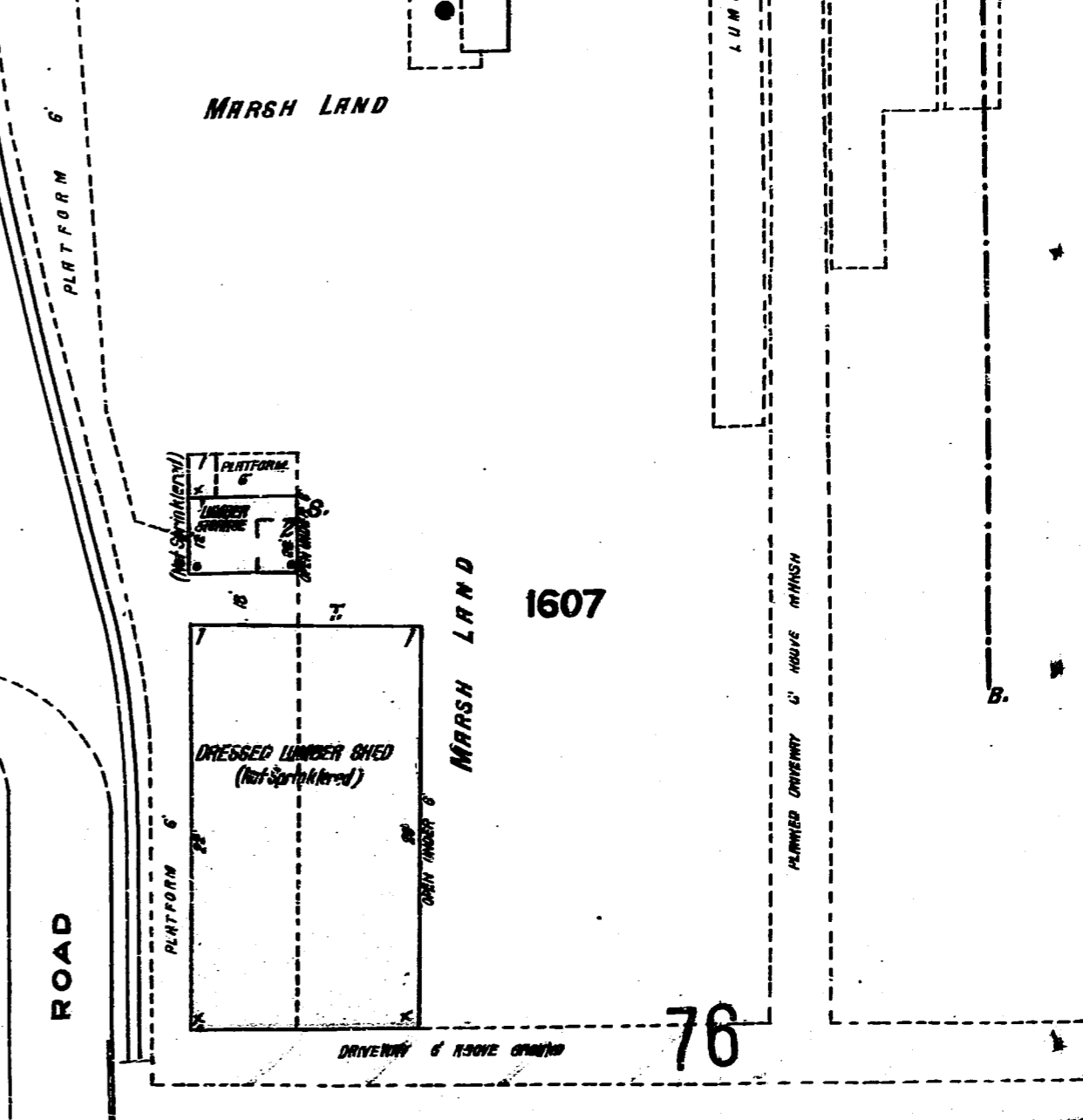
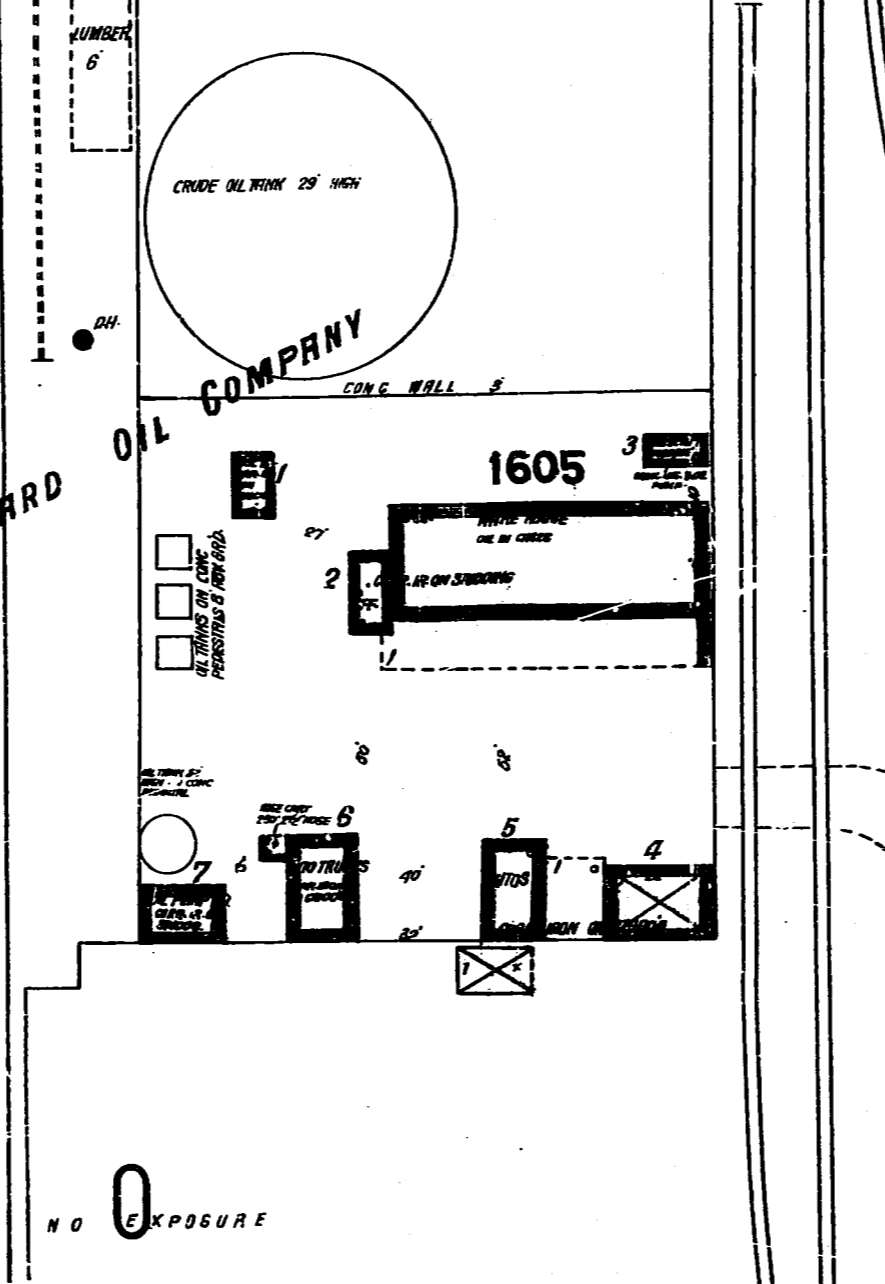
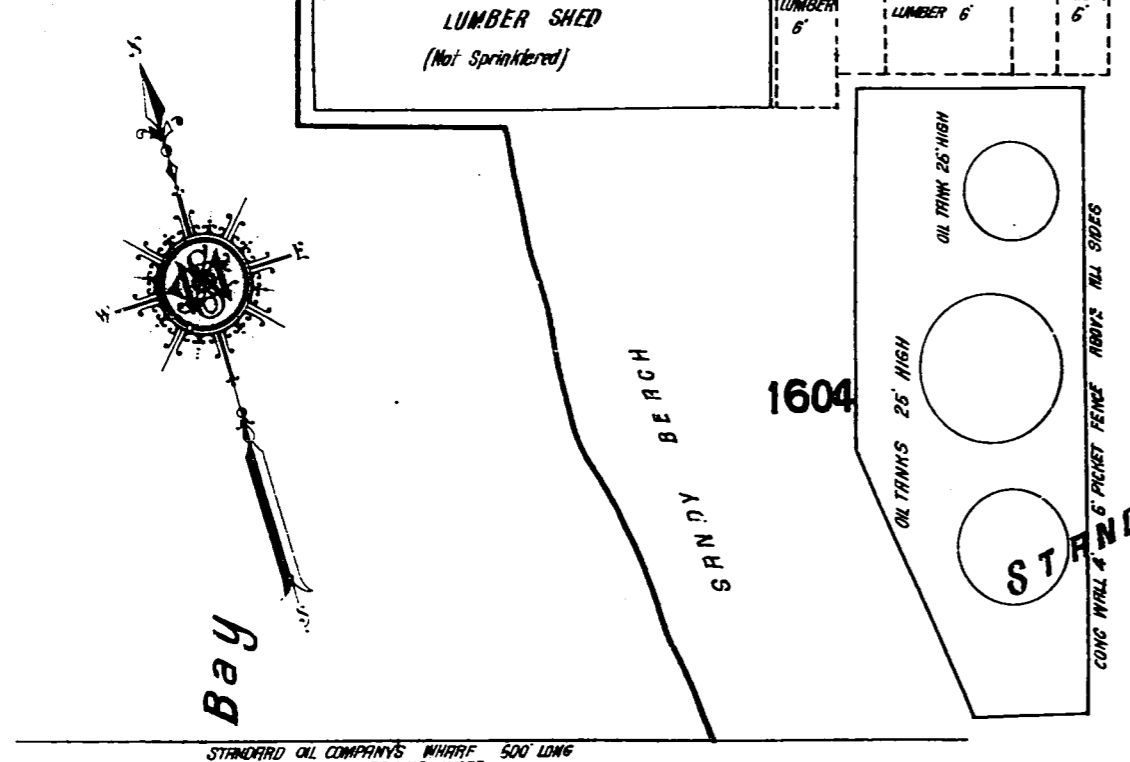
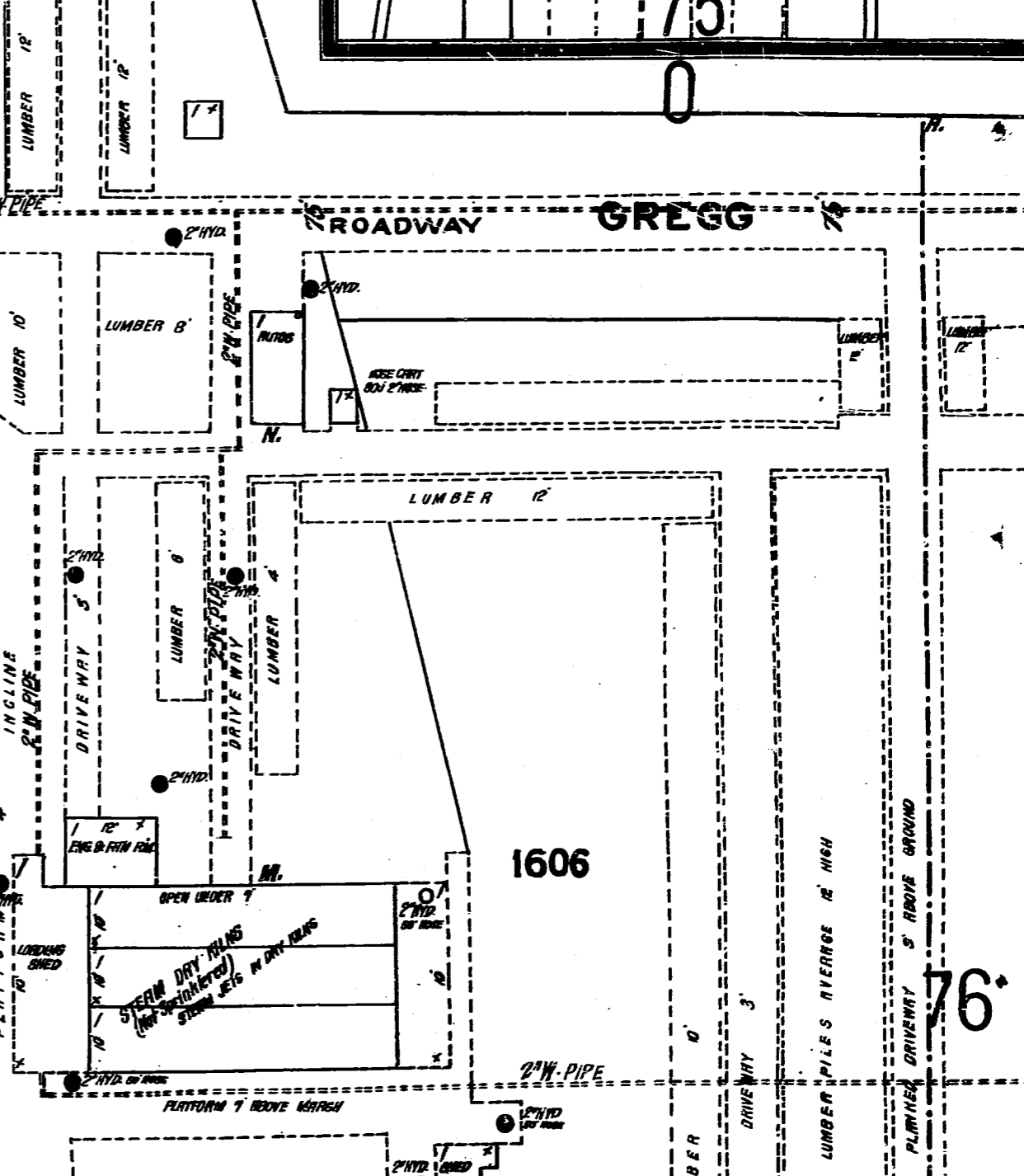
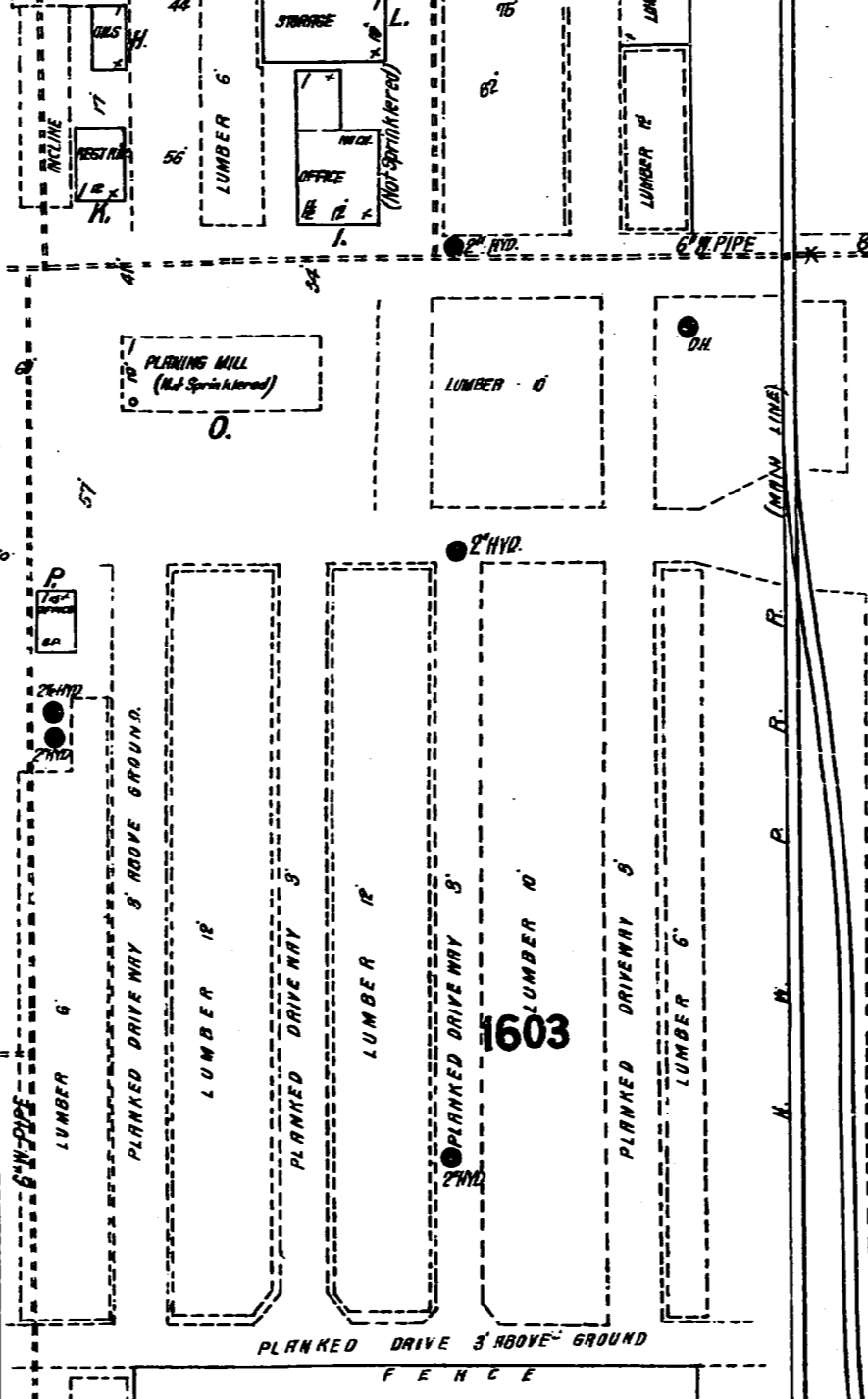
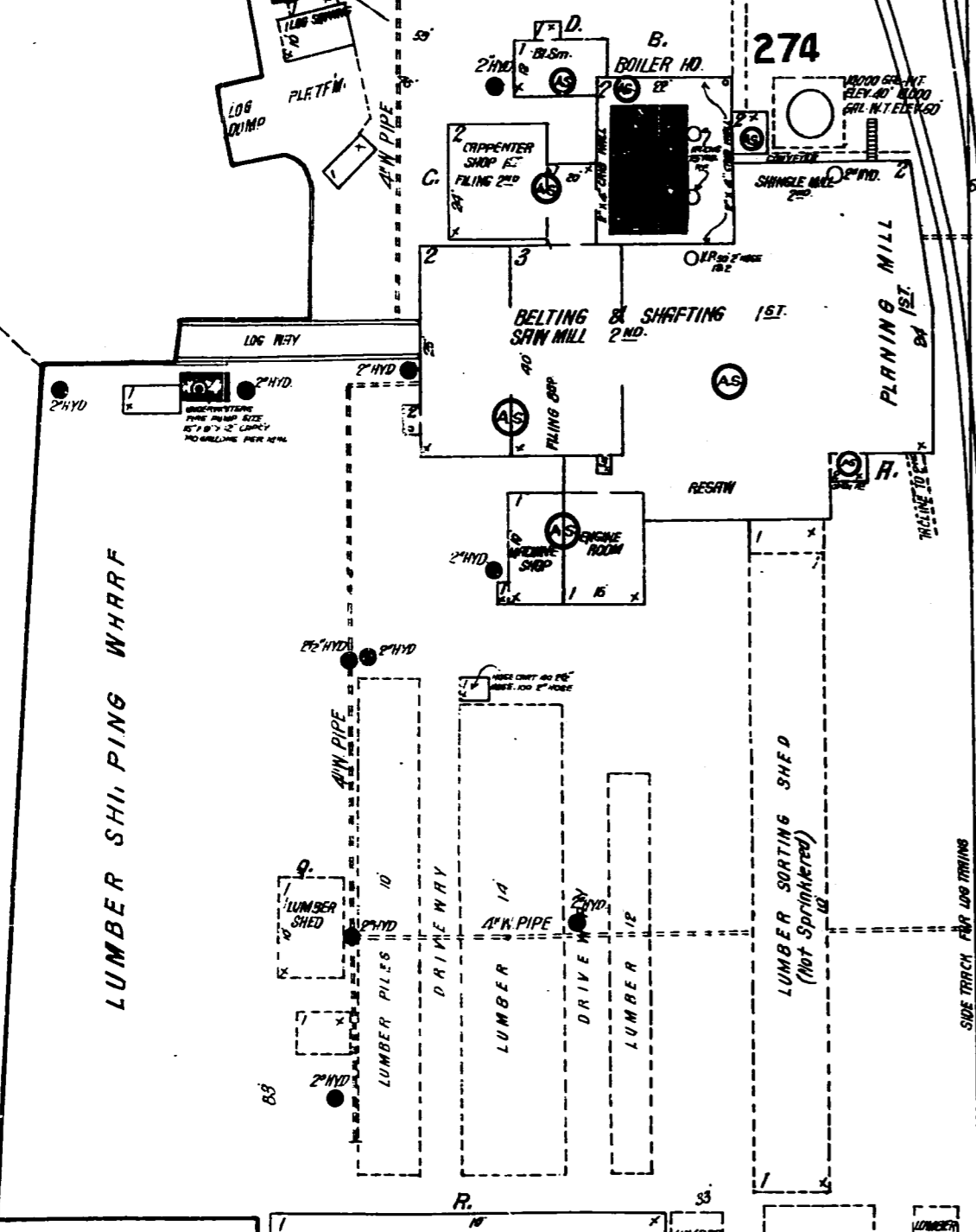
AVERAGE AMOUNT OF LUMBER IN YARDS ABOUT 120,000 FT.
CAPACITY OF MILL 40,000 FT. IN 10 HOURS.
2000 FT. INTERMEDIATE WITH CHERRY AND/ORANGE CLUCKS, MOST OF MILLWORK
THICK WITH A PRESSURE CLOSE TO MILL, AND 1 STATION, HALF HOURLY ROOMS.
REFUSE LIGHTS: ELECTRIC ROCKWELL AUTO. SPRINKLERS AS SHOWN, MET PIPE
SYSTEM. PRIMARY SUPPLY CITY WATER TANK 6" DIA. SECONDARY ALSO
MILL. H.P. ELEVATED TO TERTIARY 300'. WATER FROM CITY BY UNDERWATERS
PUMP. SIZE 8" 1/2" C.P. CAPACITY 250 GALLONS PER MINUTE CITY
WATER FOR WATERS ALSO CONNECTED WITH FIRE PUMP.

BUCKSPORT
Located 1 1/4 Miles S.W. of N.W.R.R. Depot
SEE KEY MAP

Log Pond
W.H.R.F.

HOLMES-EUREKA LUMBER COMPANY

SAW MILL & LUMBER YARDS



Scale of Feet.
50 40 30 20 0 50 100 150

Copyright 1920 by the Sanborn Map Co.

Humboldt

Humboldt Bay

0

75

75

76

76

NO EXPOSURE

NO EXPOSURE